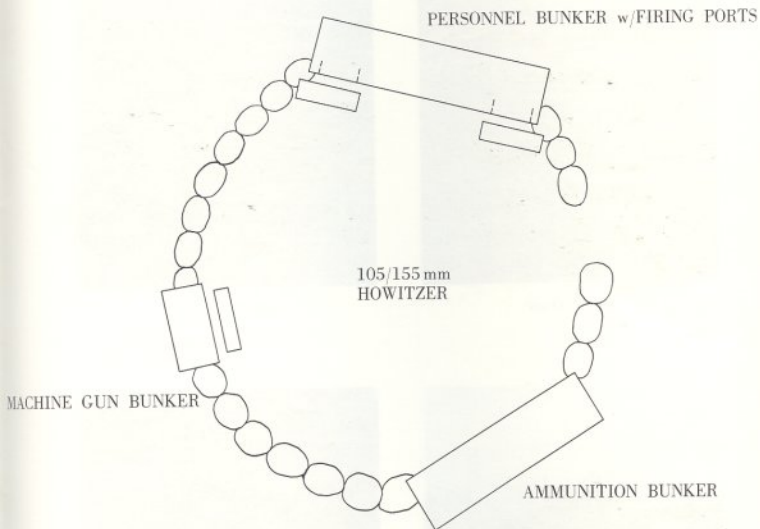


HOWITZER EMPLACEMENT



NOTE: *Firing ports will be built into the parapet construction as required.*

Of course the actual construction of these positions results in a position that many times bears only a faint resemblance to the original plan. This is apparent from the photographs on this page and the next.



105 Position



105 Position



155 Position



155 Position



8" Position



8" Position



175 Position



175 Position

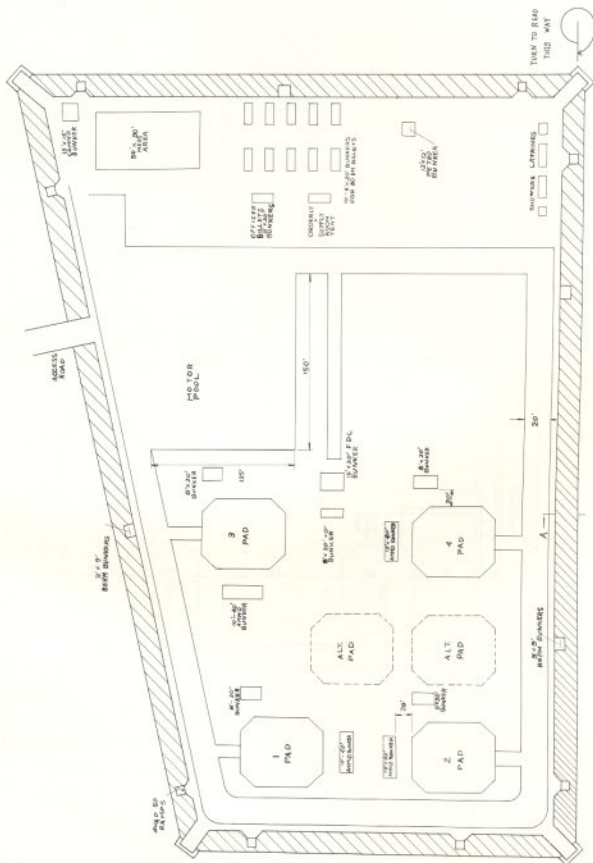
Fire Support Base

Construction in a Fire Support Base is more of a permanent nature than that of a Fire Support Patrol Base.



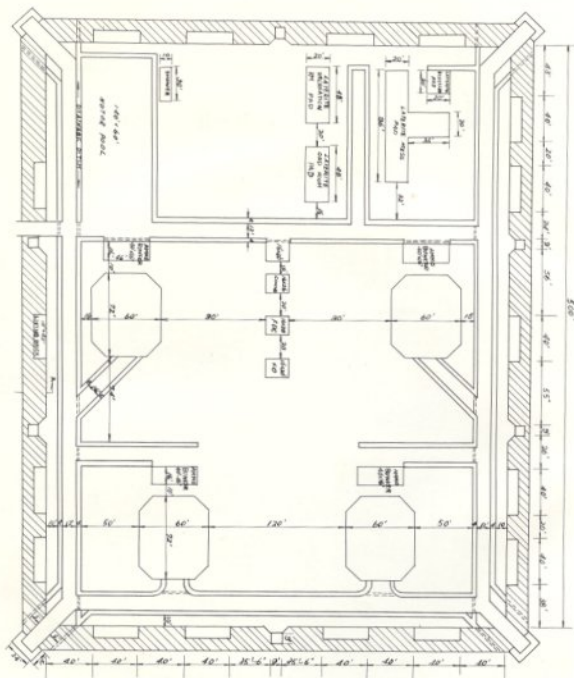
Fire Support Base

Much planning is required to construct a Fire Support Base. Engineer support is normally required and complete blueprints are drawn prior to construction if possible.



Fire Support Base Blue Print

Many variations are possible. All include gun pads, perimeter defenses and administrative support facilities.

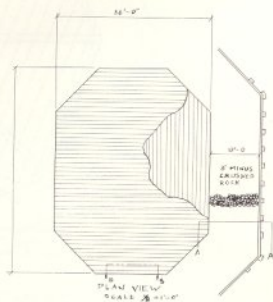
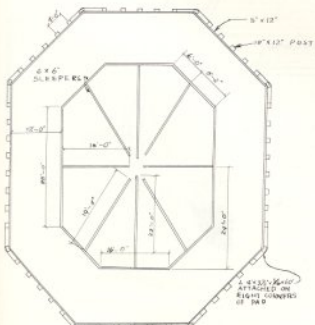
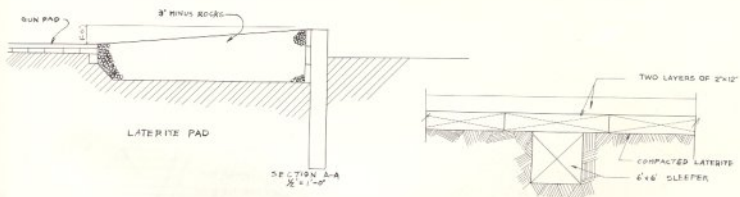


Fire Support Base Blue Print



8"/175 Gun Pad with retaining wall

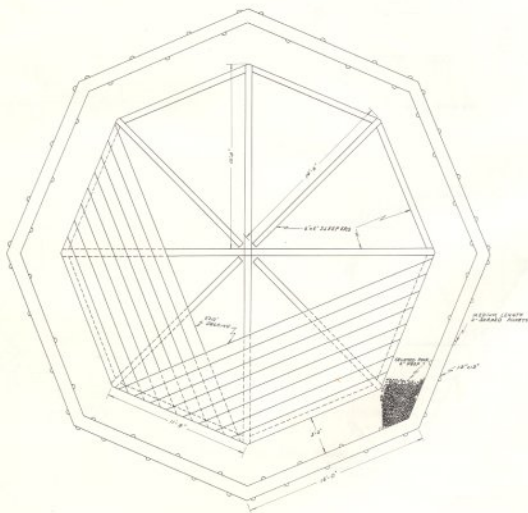
Gun pads built for an 8"/175 battery will be sufficient for any type battery. Many variations are possible. One of the most used is this one.



Blue Print for Gun Pad



155 mm
Howitzer
Pad
Design



Blue Print Of 155 Howitzer Pad

Perimeter defensive positions are extremely important in a Fire Support Base.



*Section of Perimeter
of a Fire Support Base*



Berm Bunkers

Special corner machine gun bunkers are constructed.



Machine Gun Bunker